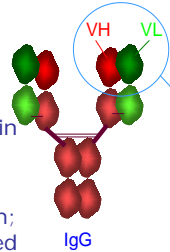
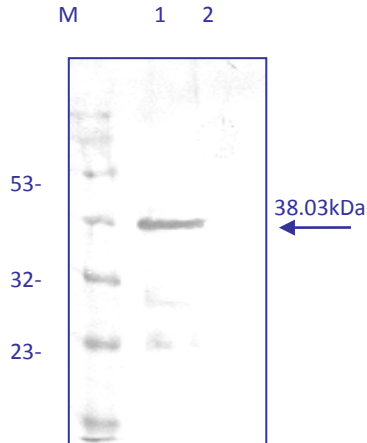


SFRP4 specific Monoclonal Antibody



Antigen description: secreted frizzled-related protein 4 (SFRP4, MW: 39.8 KDa^a) Extracellular domain from 18 to 346 aminoacid (MW: 38.03 KDa^o).^a Native protein ; ^o Recombinant protein

Synonym: FRP-4; FRPHE; MGC26498; OTTHUMP00000128365; frizzled protein, human endometrium; sFRP-4; secreted frizzled-related protein 4; secreted frizzled-related protein 4; secreted frizzled-related protein 4



M: Molecular weight marker
1- SFRP4
2- Negative control

DESCRIPTION

The sFab fragment antibody has been obtained from a human sFab library by four panning against the antigen. The Fab fragment has been purified by A protein affinity column presenting a purity of 99%. It is specific of the SFRP4 human recombinant protein.

APPLICATIONS

SFRP4 recombinant detection by ELISA and western blot (WB) techniques.

RESULTS

Western blot analysis of MAb sFabC2P2 for detection of the recombinant protein SFRP4 expressed in E.coli

CHARACTERISTICS

MAb	Isotype	Specificity
sFabC2P2	-	SFRP4

FORMAT Two available formats:

FORMAT	QUANTITY	CONCENTRATION	REFERENCE
Supernatant	5 ml	10-20 µg / ml	M.30.SFR.B.sFabC2P2
Purified sFab	1 ml	1mg / ml	M.30.SFR.I.sFabC2P2

STORAGE -20 °C

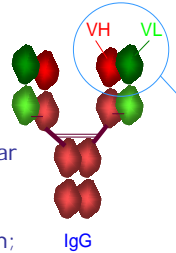
SENSITIVITY

Sensitivity of the assay was determined using antibody serial dilution. We will provide conditions of use.

SPECIFICITY

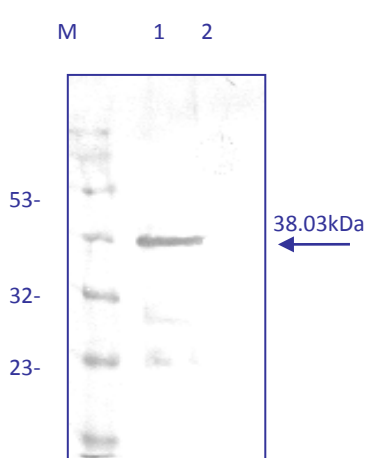
In order to determine the specificity of the assay the antibody were analyzed by western blot and ELISA against negative extracts.

Anticuerpo Monoclonal. específico de SFRP4



Descripción del antígeno; secreted frizzled-related protein 4 (SFRP4, MW: 39.8 KDa^a) Extracellular domain from 18 to 346 aminoacid (MW: 38.03 KDa^o).^a Native protein ; ^o Recombinant protein

Sinónimos: FRP-4; FRPHE; MGC26498; OTTHUMP00000128365; frizzled protein, human endometrium; sFRP-4; secreted frizzled-related protein 4; secreted frizzled-related protein 4; secreted frizzled-related protein 4



DESCRIPCIÓN

El fragmento sFab ha sido obtenido a partir de una librería humana de anticuerpos mediante cuatro rondas de selección frente al antígeno. Se ha purificado por afinidad mediante una columna de proteína A. Presenta una pureza del 99%. Es específico de la proteína recombinante humana SFRP4

APLICACIONES

Detección de SFRP4 mediante las técnicas ELISA e Inmunoblotting (IB).

RESULTADOS

Análisis por inmunoblotting con AcM sFabF4 para la detección de la proteína recombinante SFRP4 expresada en E.coli

M: Marcador Peso Molecular
1- SFRP4 Recombinante
2- Control Negativo

CARACTERÍSTICAS

AcM	Isotipo	Especificidad
sFabC2P2	-	SFRP4

PRESENTACION Disponible en dos presentaciones

PRESENTACION	CANTIDAD	CONCENTRACIÓN	REFERENCIA
Sobrenadante	5 ml	10-20 µg / ml	M.30.SFR.B.sFabC2P2
sFab Purificada	1 ml	1mg / ml	M.30.SFR.I.sFabC2P2

CONSERVACIÓN -20 °C

SENSIBILIDAD

La sensibilidad se determina haciendo diluciones seriadas del anticuerpo. Se proporcionarán condiciones de uso.

ESPECIFICIDAD

La especificidad se determinó en inmunoblotting y ELISA enfrentando los anticuerpos a extractos negativos.