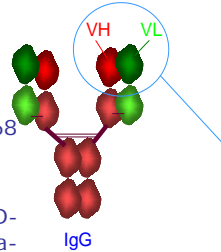


TGFBI specific Monoclonal Antibody



Antigen description: transforming growth factor, beta-induced, 68kDa (TGFBI, MW: 68KDa^a) (MW: 68 KDa^o).^a Native protein ; ^o Recombinant protein

Synonym: BIGH3; CDB1; CDG2; CDGG1; CSD; CSD1; CSD2; CSD3; EBMD; LCD1; RGD-CAP; RGD-containing collagen-associated protein; beta ig-h3; kerato-epithelin; transforming growth factor-beta-induced protein ig-h31

DESCRIPTION

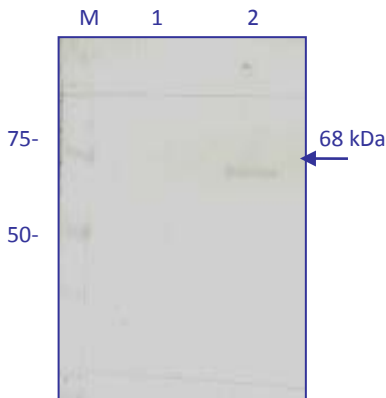
The sFab fragment antibody has been obtained from a human sFab library by four panning against the antigen. The Fab fragment has been purified by A protein affinity column presenting a purity of 99%. It is specific of the TGFBI human recombinant protein.

APPLICATIONS

TGFBI recombinant detection by ELISA and wensterblot (WB) techniques.

RESULTS

Western Blot analysis of MAb sFabF7 for detection of the recombinant protein TGFBI expressed in E.coli



M: Molecular weight marker
1- Negative control
2- TGFBI

CHARACTERISTICS

MAb	Isotype	Specificity
sFabF7	-	TGFBI

FORMAT Two formats available:

FORMAT	QUANTITY	CONCENTRATION	REFERENCE
Supernatant	5 ml	10-20 µg / ml	M.30.TGF.B.sFabF7
Purified sFab	1 ml	1mg / ml	M.30.TGF.I.sFabF7

STORAGE -20 °C

SENSITIVITY

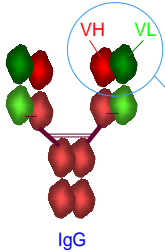
Sensitivity of the assay was determined using antibody serial dilution. We will provide the conditions of use.

SPECIFICITY

In order to determine the specificity of the assay the antibody were analyzed by western blot and ELISA against negative extracts.

Anticuerpo Monoclonal específico de TGFBI

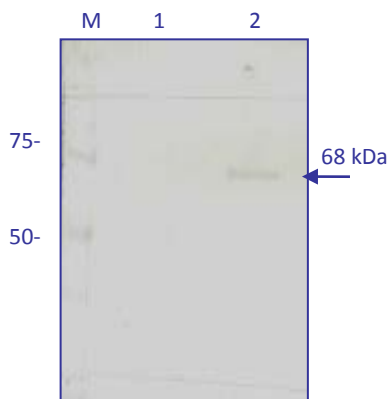
Descripción del antígeno; transforming growth factor, beta-induced, 68kDa (TGFBI, MW: 68KDa^a) (MW: 68 KDa^o).^a Native protein ; ^o Recombinant protein



Sinónimos: BIGH3; CDB1; CDG2; CDGG1; CSD; CSD1; CSD2; CSD3; EBMD; LCD1; RGD-CAP; RGD-containing collagen-associated protein; beta ig-h3; kerato-epithelin; transforming growth factor-beta-induced protein ig-h3

1

DESCRIPCIÓN



El fragmento sFab ha sido obtenido a partir de una librería humana de anticuerpos mediante cuatro rondas de "panning" frente al antígeno. Se ha purificado por afinidad mediante una columna de proteína A. Presenta una pureza del 99%. Es específico de la proteína recombinante humana TGFBI

APLICACIONES

Detección de TGFBI mediante las técnicas ELISA e Inmunoblotting (IB).

RESULTADOS

Análisis por inmunoblotting con AcM sFabF7 para la detección de la proteína recombinante TGFBI expresada en E.coli

M: Marcador Peso Molecular
1- TGFBI Recombinante
2- Control Negativo

CARACTERÍSTICAS

AcM	Isotipo	Especificidad
sFabF7	-	TGFBI

PRESENTACION Disponible en dos presentaciones

PRESENTACION	CANTIDAD	CONCENTRACIÓN	REFERENCIA
Sobrenadante	5 ml	10-20 µg / ml	M.30.TGF.B.sFabF7
sFab Purificada	1 ml	1mg / ml	M.30.TGF.I.sFabF7

CONSERVACIÓN -20 °C

SENSIBILIDAD

La sensibilidad se determina haciendo diluciones seriadas del anticuerpo. Se proporcionarán condiciones de uso.

ESPECIFICIDAD

La especificidad se determinó en inmunoblotting y ELISA enfrentando los anticuerpos a extractos negativos.